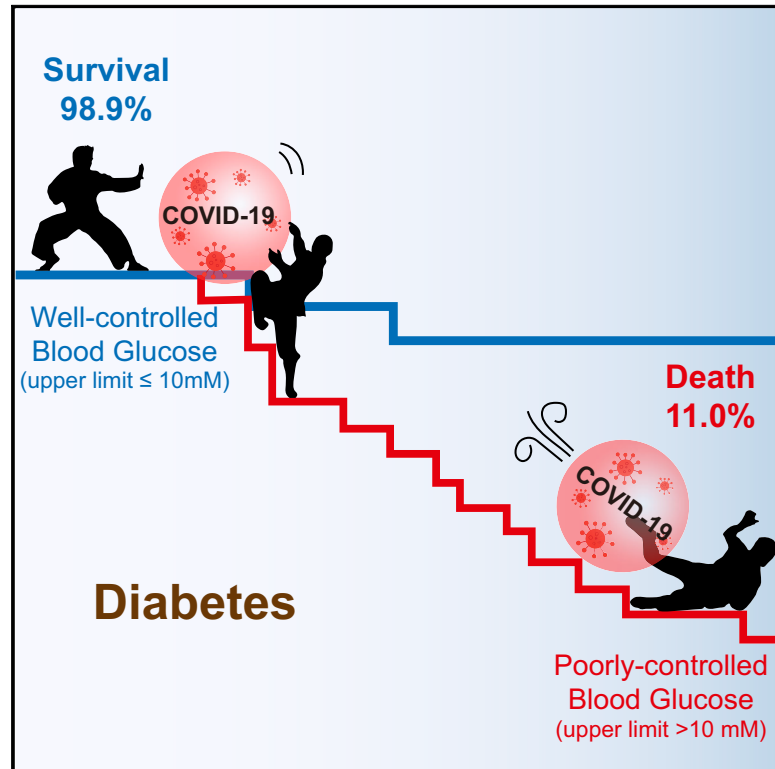


Association of Blood Glucose Control and Outcomes in Patients with COVID-19 and Pre-existing Type 2 Diabetes

Graphical Abstract



Authors

Lihua Zhu, Zhi-Gang She, Xu Cheng, ...,
Jiao Guo, Bing-Hong Zhang,
Hongliang Li

Correspondence

13886190549@139.com (X.H.),
gyguoyz@163.com (J.G.),
rm001985@whu.edu.cn (B.-H.Z.),
lihl@whu.edu.cn (H.L.)

In Brief

Type 2 diabetes (T2D) correlates with a worse outcome for COVID-19. Here, Zhu et al. show that among $\sim 7,300$ cases of COVID-19, T2D is associated with a higher death rate, but diabetics with better controlled blood glucose die at a lower rate than diabetics with poorly controlled blood glucose.

Highlights

- A cohort of 7,336 COVID-19 patients with or without diabetes was retrospectively studied
- Diabetes status increased the need for medical interventions during COVID-19
- Diabetes status increased the mortality risk of patients with COVID-19
- Well-controlled blood glucose correlated with improved outcomes in infected patients

Clinical and Translational Report

Association of Blood Glucose Control and Outcomes in Patients with COVID-19 and Pre-existing Type 2 Diabetes

Lihua Zhu,^{1,2,28} Zhi-Gang She,^{1,2,28} Xu Cheng,^{1,2,28} Juan-Juan Qin,^{1,2,28} Xiao-Jing Zhang,^{1,2,28} Jingjing Cai,³ Fang Lei,² Haitao Wang,⁴ Jing Xie,¹ Wenxin Wang,^{1,2} Haomiao Li,^{1,2} Peng Zhang,^{2,5} Xiaohui Song,² Xi Chen,⁴ Mei Xiang,⁶ Chaozheng Zhang,² Liangjie Bai,² Da Xiang,² Ming-Ming Chen,^{1,2} Yanqiong Liu,² Youqin Yan,⁷ Mingyu Liu,⁸ Weiming Mao,⁹ Jinjing Zou,¹⁰ Liming Liu,¹¹ Guohua Chen,¹² Pengcheng Luo,¹³ Bing Xiao,¹⁴ Changjiang Zhang,^{1,15} Zixiong Zhang,¹⁵ Zhigang Lu,¹⁶ Junhai Wang,¹⁷ Haofeng Lu,¹⁸ Xigang Xia,¹⁹ Daihong Wang,²⁰ Xiaofeng Liao,²¹ Gang Peng,²² Ping Ye,⁶ Jun Yang,²³ Yufeng Yuan,⁴ Xiaodong Huang,^{24,*} Jiao Guo,^{25,*} Bing-Hong Zhang,^{26,*} Q1 and Hongliang Li^{1,2,5,27,29,*}

¹Department of Cardiology, Renmin Hospital of Wuhan University, Wuhan 430072, China

²Institute of Model Animal, Wuhan University, Wuhan 430072, China

³Department of Cardiology, The Third Xiangya Hospital, Central South University, Changsha 410000, China

⁴Department of Hepatobiliary and Pancreatic Surgery, Zhongnan Hospital of Wuhan University, Wuhan 430072, China

⁵Medical Science Research Center, Zhongnan Hospital of Wuhan University, Wuhan 430072, China

⁶Department of Cardiology, The Central Hospital of Wuhan, Tongji Medical College, Huazhong University of Science and Technology, Wuhan 430072, China

⁷Wuhan Seventh Hospital, Wuhan 430072, China

⁸The Ninth Hospital of Wuhan City, Wuhan 430072, China

⁹Department of General Surgery, Huanggang Central Hospital, Huanggang 438000, China

¹⁰Department of Pulmonary and Critical Care Medicine, Renmin Hospital of Wuhan University, Wuhan 430072, China

¹¹Department of General Surgery, Ezhou Central Hospital, Ezhou 436000, China

¹²Department of Neurology, Wuhan First Hospital/Wuhan Hospital of Traditional Chinese and Western Medicine, Wuhan 430072, China

¹³Department of Urology, Wuhan Third Hospital and Tongren Hospital of Wuhan University, Wuhan 430072, China

¹⁴Department of Stomatology, Xiantao First People's Hospital, Xiantao 433000, China

¹⁵The Central Hospital of Enshi Tujia and Miao Autonomous Prefecture, Enshi 445000, China

¹⁶Department of Neurology, The First People's Hospital of Jingmen affiliated to Hubei Minzu University, Jingmen 448000, China

¹⁷Department of Orthopedics, The First People's Hospital of Jingmen affiliated to Hubei Minzu University, Jingmen 448000, China

¹⁸Department of Hepatobiliary Surgery, The First Affiliated Hospital of Changjiang University, Jingzhou 434000, China

¹⁹Department of Hepatobiliary Surgery, Jingzhou Central Hospital, Jingzhou 434000, China

²⁰Department of Hepatobiliary and Pancreatic Surgery, Xianning Central Hospital, Xianning 437000, China

²¹Xiangyang Central Hospital, Affiliated Hospital of Hubei University of Arts and Science, Xiangyang 441000, China

²²Department of Hepatobiliary and Pancreatic Surgery, Suizhou Central Hospital Affiliated to Hubei Medical College, Suizhou 441300, China

²³Department of Cardiology, The First College of Clinical Medical Science, China Three Gorges University and Yichang Central People's Hospital and Institute of Cardiovascular Diseases, China Three Gorges University, Yichang 443000, China

²⁴Department of Gastroenterology, Wuhan Third Hospital and Tongren Hospital of Wuhan University, Wuhan 430072, China

²⁵Guangdong Metabolic Diseases Research Center of Integrated Chinese and Western Medicine & Key Laboratory of Glucolipid Metabolic Disorder, Ministry of Education of China and Institute of Chinese Medicine, Guangdong Pharmaceutical University, Guangdong TCM Key Laboratory for Metabolic Diseases, Guangzhou 510006, China

²⁶Department of Neonatology, Renmin Hospital of Wuhan University, Wuhan 430072, China

²⁷Basic Medical School, Wuhan University, Wuhan 430072, China

²⁸These authors contributed equally

²⁹Lead Contact

*Correspondence: 13886190549@139.com (X.H.), gyguoyz@163.com (J.G.), rm001985@whu.edu.cn (B.-H.Z.), lihl@whu.edu.cn (H.L.) <https://doi.org/10.1016/j.cmet.2020.04.021>

Context and Significance

Although type 2 diabetes (T2D) is a major comorbidity of novel coronavirus disease 2019 (COVID-19), the impact of blood glucose control on the degree of medical interventions required and on all-cause mortality of patients with COVID-19 and pre-existing T2D remains unclear. Here, Zhu et al. report that among ~7,300 individuals with COVID-19 (among which nearly 1,000 had T2D) in Hubei Province, China, those with T2D had significantly increased medical interventions and mortality risk. But among the patients with T2D, those with relatively well-controlled blood glucose regulation (upper limit ≤ 10 mmol/L) fared much better than those with poorly controlled blood glucose (upper limit > 10 mmol/L). These findings provide clinical evidence correlating more proper blood glucose control with improved outcomes in patients with COVID-19.

SUMMARY

Type 2 diabetes (T2D) is a major comorbidity of COVID-19. However, the impact of blood glucose (BG) control on the degree of required medical interventions and on mortality in patients with COVID-19 and T2D remains uncertain. Thus, we performed a retrospective, multi-centered study of 7,337 cases of COVID-19 in Hubei Province, China, among which 952 had pre-existing T2D. We found that subjects with T2D required more medical interventions and had a significantly higher mortality (7.8% versus 2.7%; adjusted hazard ratio [HR], 1.49) and multiple organ injury than the non-diabetic individuals. Further, we found that well-controlled BG (glycemic variability within 3.9 to 10.0 mmol/L) was associated with markedly lower mortality compared to individuals with poorly controlled BG (upper limit of glycemic variability exceeding 10.0 mmol/L) (adjusted HR, 0.14) during hospitalization. These findings provide clinical evidence correlating improved glycemic control with better outcomes in patients with COVID-19 and pre-existing T2D.

Q5 Q4 Q3 INTRODUCTION

The novel coronavirus disease 2019 (COVID-19) is caused by infection from the newly emerged, highly contagious coronavirus SARS-CoV-2 (Wu and McGoogan, 2020). SARS-CoV-2 mainly invades the respiratory tract and lungs, leading to a new type of coronavirus pneumonia (Zhu et al., 2020). The severe cases of COVID-19 can rapidly progress to acute respiratory distress syndrome (ARDS), septic shock, and multiple organ dysfunction syndrome (MODS) (Guan et al., 2020). Elderly individuals, along with those with pre-existing conditions, such as cancer, cardiovascular diseases, diabetes mellitus, and acute kidney injury, have a demonstrated higher risk for developing more severe cases of COVID-19, as well as suffering a higher risk of mortality (Wang et al., 2020; Zhang et al., 2020b; Zhou et al., 2020). The collision between the two global pandemics of COVID-19 and type 2 diabetes (T2D) has led to the grim reality that T2D is already the second most common comorbidity of COVID-19 (Zhou et al., 2020). However, current evidence implicating T2D in worse COVID-19 prognosis has mostly come from relatively limited-sized cohorts (Deng and Peng, 2020; Zhang et al., 2020a; Zhou et al., 2020). Thus, the clinical features of patients with T2D infected by SARS-CoV-2 remain to be comprehensively clarified in a large-scale analysis, which is needed to more efficiently and precisely manage the treatment of such patients.

It has been well established that patients with diabetes are more susceptible to infections in general and exhibit worse prognosis once infected compared to the non-diabetic population (Kumar Nathella and Babu, 2017; Xu et al., 2019). Such a higher susceptibility has also been previously observed for other coronavirus epidemics. For example, in patients with severe acute respiratory syndrome (SARS), pre-existing T2D was independently associated with poor outcomes. The percentage of known T2D history was significantly higher among patients who succumbed to SARS than who survived (Booth et al., 2003; Yang et al., 2006). Further, epidemiological studies also indicate that T2D was the primary comorbidity associated with severe or lethal MERS-CoV infections (Alqahtani et al., 2018). And with regard to the current SARS-CoV-2 pandemic, several recent studies, though with limited participants, have already suggested that T2D is a common comorbidity and constitutes

a higher proportion of patients with severe and ICU-admitted cases of COVID-19 than patients with mild symptoms (Deng and Peng, 2020; Wang et al., 2020; Zhang et al., 2020a; Zhou et al., 2020). These associations between diabetes and worse outcome in viral infections are not unexpected as hyperglycemia is detrimental to the control of viremia and inflammation, aggravating morbidity and mortality in a variety of patients (Forbes et al., 2018). However, an overly rigid glucose control may increase the risk of severe hypoglycemia, which can also lead to an increased mortality (Rodriguez-Gutierrez et al., 2019). Consequently, previous clinical trials examining the effects of glucose control on mortality have yielded conflicting results (Forbes et al., 2018; Van den Berghe et al., 2006). For individuals with COVID-19 and pre-existing T2D, a key challenge for clinicians is to improve outcomes in the face of uncertainty regarding the degree of glycemic management that should be maintained and any effects this might have on the benefits and risks of overall treatment. Thus, detailed analyses of data from such patients is needed that links plasma glucose levels with clinic outcomes, including mortality.

In this report, we performed a retrospective longitudinal, multi-centered study from a cohort of 9,663 confirmed COVID-19 cases enrolled among 19 hospitals in Hubei Province, China, focusing on the association between plasma glucose levels and clinic outcomes in COVID-19 patients with T2D. In addition to a significant association between diabetic status and higher mortality rate in patients with COVID-19 and pre-existing T2D versus non-diabetic subjects with COVID-19, our study indicated that well-controlled glycemia was associated with a markedly improved outcome of patients with COVID-19 and pre-existing T2D.

RESULTS AND DISCUSSION

Clinical Characteristics of Patients with COVID-19 and Pre-existing T2D upon Admission

Clinic characteristics were collected from a total of 7,337 participants out of 9,663 confirmed cases of COVID-19, including 952 subjects with pre-existing T2D ($n = 510$ male, 53.6%) and 6,385 non-diabetic cases ($n = 2,967$ male, 46.5%) (Figure 1). Of the initial 9,663 cases enrolled, 2,326 patients with COVID-19 were excluded from the study, including 1,013

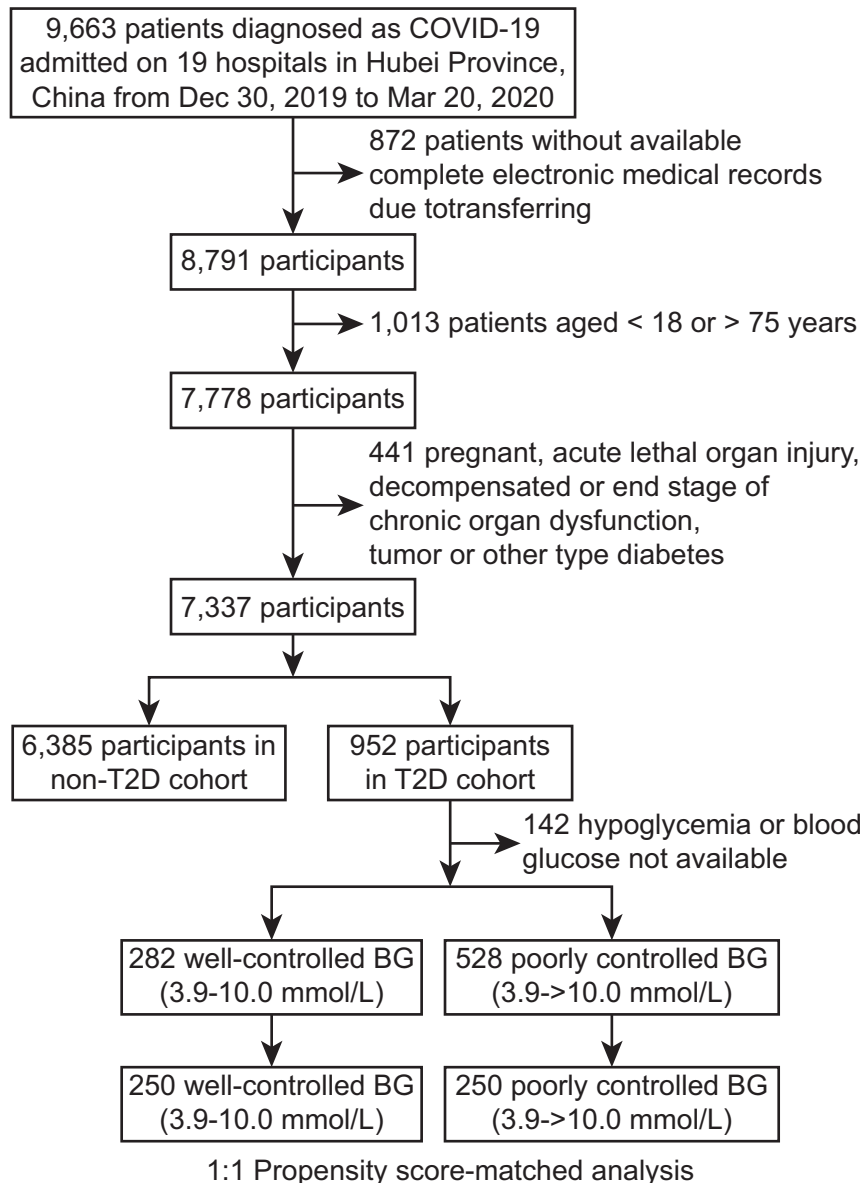


Figure 1. Study Inclusion Criteria

A schematic overview illustrating participant enrollment in the cohort study and the various exclusion and inclusion criteria among the initial case group. Briefly, a total of 9,663 patients with COVID-19 were included. After various exclusion criteria, 2,326 patients were removed from the study. Of the remaining 7,337 patients, data from 6,385 patients without diabetes (non-T2D) were placed in one group, while 952 individuals with type 2 diabetes (T2D) were placed in a second group. Of the 952 cases with T2D, 142 cases were further excluded due to hypoglycemia or lack of BG readings. Of the remaining 810 cases of T2D, 282 were considered to have well-controlled BG, while 528 had poorly controlled BG. And of these two T2D groups, 250 of each were used for propensity score-matched analysis.

index (BMI) in patients with or without T2D was 24.7 (IQR, 22.0–26.4) and 23.4 (IQR, 21.0–26.0), respectively. The median duration from the first symptom to admission was 10 days (IQR, 6–19) for both groups. The major symptoms for both groups were fever (71.8%), cough (63.5%), fatigue (32.3%), and dyspnea (16.1%), similar to the general population of patients (Chen et al., 2020; Guan et al., 2020; Huang et al., 2020; Wang et al., 2020). Patients with T2D reported significantly higher incidences of fatigue (38.0% versus 31.4%) and dyspnea (20.5% versus 15.4%) compared to the non-diabetic group. Pre-existing hypertension (53.4% versus 19.7%), coronary heart disease (CHD; 13.7% versus 3.7%), cerebrovascular disease (5.6% versus 1.5%), and chronic kidney disease (4.9% versus 1.3%) had higher frequencies in the T2D group compared to the non-diabetic group. Chest CT scans indicated the incidence of bilateral

lung lesion was higher (88.1% versus 80.4%) in the diabetic group compared to non-diabetic patients. While heart rate and respiratory rates did not show differences between the diabetic and the non-diabetic groups, systolic blood pressure was modestly higher in the diabetic group (130 mmHg [120–142] versus 126 mmHg [120–136]). Lab findings showed that blood glucose (BG) level was much higher in the diabetic group compared to the non-diabetic group, as expected (8.3 mmol/L [6.2–12.4] versus 5.2 mmol/L [4.7–6.1]), with higher levels of HbA1c (7.9% [6.8%–9.5%] versus 6.1% [5.7%–6.6%]). Patients with T2D had a significantly higher incidence of lymphopenia (44.5% versus 32.6%), and higher ratio of elevation of leukocyte (11.3% versus 6.6%) and neutrophil (17.2% versus 9.9%) counts in peripheral blood, relative to the non-diabetic individuals. At the same time, elevated serum markers, indicating inflammation (C-reactive protein, CRP

patients younger than 18 or older than 75 years old, 872 patients without complete medical records, 13 patients with acute myocardial infarction, 5 patients with acute coronary syndrome, 8 patients with acute pulmonary embolism, 10 patients with acute stroke, 11 patients with acute severe pancreatitis, 9 patients with cirrhosis, 37 patients with above stage 3 chronic renal insufficiency, 7 patients with severe congestive heart failure, 104 patients with pregnancy, 227 patients with malignancy, 7 patients with type 1 diabetes, 2 patients with a history of gestational diabetes, and 1 patient with drug-induced diabetes. From the final cohort of 7,337 COVID-19 patients analyzed, the prevalence of T2D was 13.0%, which was similar to the nationwide prevalence of T2D in China (about 10.9%) (Wang et al., 2017). The median ages were 62 (IQR, 55–68) and 53 (IQR, 40–63) in the diabetic and non-diabetic groups, respectively (Table S1). The median body mass

lung lesion was higher (88.1% versus 80.4%) in the diabetic group compared to non-diabetic patients. While heart rate and respiratory rates did not show differences between the diabetic and the non-diabetic groups, systolic blood pressure was modestly higher in the diabetic group (130 mmHg [120–142] versus 126 mmHg [120–136]). Lab findings showed that blood glucose (BG) level was much higher in the diabetic group compared to the non-diabetic group, as expected (8.3 mmol/L [6.2–12.4] versus 5.2 mmol/L [4.7–6.1]), with higher levels of HbA1c (7.9% [6.8%–9.5%] versus 6.1% [5.7%–6.6%]). Patients with T2D had a significantly higher incidence of lymphopenia (44.5% versus 32.6%), and higher ratio of elevation of leukocyte (11.3% versus 6.6%) and neutrophil (17.2% versus 9.9%) counts in peripheral blood, relative to the non-diabetic individuals. At the same time, elevated serum markers, indicating inflammation (C-reactive protein, CRP

[57.0% versus 42.4%] and procalcitonin [33.3% versus 20.3%]), decreased kidney function (creatinine [12.0% versus 5.0%]), and increased coagulation status (D-dimer [50.5% versus 33.3%]), were found more frequently in the T2D group than in the non-diabetic group. Furthermore, SpO₂ lower than 95% occurred more frequently in the diabetic group versus the non-diabetic group (18.8% versus 13.2%) on admission.

Patients with COVID-19 and Pre-existing T2D Require More Intensive In-Hospital Treatment

The patients with pre-existing T2D received significantly more intensive integrated treatments to manage their symptoms of COVID-19 than the non-diabetic subjects. The former group registered a higher need for antibiotics (61.3% versus 56.9%), antifungal drugs (2.5% versus 1.2%), systemic corticosteroids (29.4% versus 22.8%), immunoglobulin (23.0% versus 17.7%), anti-hypertensive drug (45.1% versus 21.1%), and even vasoactive drugs (7.7% versus 2.2%). Oxygen inhalation (76.9% versus 61.2%), noninvasive ventilation (10.2% versus 3.9%), and invasive ventilation (3.6% versus 0.7%) were also applied significantly more frequently to the individuals with T2D compared to the patients without T2D (Table S2).

T2D Is Correlated with a Higher Risk of All-Cause Mortality and Detrimental Comorbidities in Patients with COVID-19

During the 28-day follow-up period, we performed a retrospective longitudinal analysis on various parameters starting from the time of admission to the hospital for each patient in the study. We noticed that, despite having received more aggressive treatment against COVID-19 and the comorbidities, the diabetic group had greater incidences of decreased lymphocyte counts and increased neutrophil counts, as well as higher levels of serum interleukin-6 (IL-6), CRP, and lactic dehydrogenase (LDH), accompanied by higher BG levels, compared to the non-diabetic group. The BG level was also significantly associated with comorbid hypertension and CHD, the incidences of decreased lymphocyte count, and elevated neutrophil count and the levels of serum IL-6, CRP, and creatinine in the entire cohort included (Figure S1).

During the 28-day follow-up period starting from admission, the in-hospital death rate was significantly higher in patients with pre-existing T2D relative to the non-diabetic individuals (7.8% versus 2.7%, $p < 0.001$) (Table S3). The crude HR of the 28-day all-cause mortality in the diabetic group versus non-diabetic individuals was 2.90 (95% CI, 2.21–3.81; $p < 0.001$) (Table S4). After adjusting for age and gender on admission, the HR of the all-cause mortality between these two groups was 1.70 (95% CI, 1.29–2.24; $p < 0.001$) (Table S4). We further adjusted for the severity of COVID-19 and found that the HR of the all-cause mortality between these two groups was 1.49 (95% CI, 1.13–1.96; $p = 0.005$) (Figure S2; Table S4). We here did not adjust for comorbidities closely related to T2D, including hypertension, CHD, cerebrovascular disease, and chronic kidney disease, as these diseases often co-exist with T2D.

Furthermore, the individuals with T2D had a greater occurrence of ARDS (16.9% versus 7.2%), acute heart injury (7.3% versus 3.0%), acute kidney injury (3.9% versus 0.8%), septic shock (3.8% versus 1.0%), and disseminated intravascular

coagulation (DIC) (0.5% versus 0.2%) than the non-diabetic group (Table S3). Cox regression analysis indicated T2D was significantly correlated with the occurrence of ARDS, acute kidney injury, and septic shock with respective adjusted HRs of 1.44 (95% CI, 1.20–1.73), 3.01 (95% CI, 1.94–4.68), and 1.95 (95% CI, 1.18–3.20), after adjusting for age, gender, and severity of COVID-19 among the patients (Table S4). Our current study was based on the largest diabetic COVID-19 cohort so far analyzed, and the results were unequivocal to implicate diabetes mellitus in higher risk of death and other detrimental outcomes of COVID-19. Notably, care must be taken in interpreting the significant difference in outcomes between diabetic and non-diabetic patients with COVID-19, since there were notable differences in the covariate distributions between the two groups.

The pathophysiological mechanisms underlying the impact of T2D on COVID-19 progression remain to be fully investigated. In patients with diabetes, pulmonary dysfunction involving lung volume, pulmonary diffusing capacity, control of ventilation, bronchomotor tone, and neuroadrenergic bronchial innervation have been reported (Fuso et al., 2019), which may account for the propensity of poor outcomes in patients with COVID-19 and T2D. At the same time, a dysregulated immune response caused by T2D is likely also responsible for the increased disease severity of COVID-19 in patients with T2D as a higher ratio of lymphopenia and increased levels of neutrophils, serum CRP, and IL-6 were observed in the patients with COVID-19 and pre-existing T2D in our study. These findings dovetail with immune dysregulation observed in other coronavirus infection-triggered pneumonia (Kulcsar et al., 2019). In an experimental model of MERS, diabetic mice had lower numbers of inflammatory monocytes and macrophages and CD4⁺ T cells, which was accompanied by lower levels of Ccl2 and Cxcl10 expression (Kulcsar et al., 2019). Furthermore, T2D is associated with activation of the renin-angiotensin system in different tissues (Candido et al., 2002). Considering SARS-CoV-2 utilizes angiotensin-converting enzyme 2 (ACE2) to bind and gain entry to infected cells (Hoffmann et al., 2020; Lu et al., 2020) and reduces the expression of ACE2 (Kuba et al., 2005), overactivation of the renin-angiotensin system may also contribute to the increased adverse risk in patients with COVID-19 and diabetes. In this respect, application of renin-angiotensin system inhibitors may have therapeutic effect in patients with COVID-19 and pre-existing T2D.

Differential Glucose Control Is Associated with Different Outcomes in Patients with COVID-19 and Pre-existing T2D

Among the cohort with COVID-19 and T2D, there were 282 individuals with well-controlled BG (136 males, 48.2%) and 528 individuals with poorly controlled BG (298 males, 56.4%). The median BG level was much lower in the well-controlled BG group than the poorly controlled BG group (6.4 mmol/L [5.2–7.5] versus 10.9 mmol/L [7.6–14.3]), and the levels of HbA_{1c} in these two groups were 7.3% (6.6%–8.2%) and 8.1% (7.2%–10.1%), respectively. The patients from the well-controlled BG group also had significantly lower incidences of lymphopenia (30.5% versus 49.6%), lower rates of increased counts of leukocyte (12.2% versus 6.3%) and neutrophil (19.4% versus 10.7%), and elevated serum CRP (47.5% versus 59.5%) and

Table 1. Characteristics of Patients in the Well-Controlled and Poorly Controlled BG Groups Before and After Propensity Score Matching

| Parameters | Unmatched | | | Matched (1:1) | | |
|---|---------------------------|-----------------------------|--------|---------------------------|-----------------------------|--------|
| | Well Controlled (n = 282) | Poorly Controlled (n = 528) | SD | Well Controlled (n = 250) | Poorly Controlled (n = 250) | SD |
| Clinical Characteristics on Admission | | | | | | |
| Age, median (IQR) | 62 (55–67) | 63 (56–68) | –0.094 | 62 (55–67) | 63 (54–68) | 0.008 |
| Male gender, n (%) | 136 (48.2%) | 298 (56.4%) | –0.165 | 126 (50.4%) | 126 (50.4%) | 0.000 |
| Female gender, n (%) | 146 (51.8%) | 230 (43.6%) | 0.165 | 124 (49.6%) | 124 (49.6%) | 0.000 |
| Heart rate, median (IQR), bpm | 84.0 (77.0–95.0) | 85.0 (76.3–97.0) | –0.103 | 84.0 (76.5–93.5) | 83.0 (76.0–96.0) | –0.048 |
| Respiratory rate, median (IQR) | 20.0 (18.0–20.0) | 20.0 (19.0–21.0) | –0.180 | 20.0 (18.0–20.0) | 20.0 (19.0–21.0) | 0.008 |
| SBP, median (IQR), mmHg | 130.0 (120.0–142.0) | 130.0 (120.0–142.0) | 0.073 | 130.0 (120.0–142.0) | 130.0 (120.0–142.0) | 0.085 |
| DBP, median (IQR), mmHg | 80.0 (73.0–89.0) | 80.0 (72.0–86.0) | 0.074 | 80.0 (73.0–86.5) | 80.0 (72.0–86.0) | 0.025 |
| Symptom onset to admission, median (IQR), day | 13.0 (7.0–23.0) | 10.0 (6.0–17.0) | 0.261 | 12.0 (7.0–20.0) | 10.0 (6.0–18.8) | 0.177 |
| Fever, n (%) | 182 (64.5%) | 381 (72.2%) | –0.164 | 166 (66.4%) | 171 (68.4%) | –0.043 |
| Cough, n (%) | 169 (59.9%) | 350 (66.3%) | –0.132 | 155 (62.0%) | 153 (61.2%) | 0.016 |
| Fatigue, n (%) | 90 (31.9%) | 218 (41.3%) | –0.196 | 87 (34.8%) | 90 (36.0%) | –0.025 |
| Dyspnea, n (%) | 48 (17.0%) | 117 (22.2%) | –0.130 | 44 (17.6%) | 39 (15.6%) | 0.054 |
| Comorbidities on Admission | | | | | | |
| Hypertension, n (%) | 156 (55.3%) | 282 (53.4%) | 0.038 | 136 (54.4%) | 135 (54.0%) | 0.008 |
| Coronary heart disease, n (%) | 42 (14.9%) | 68 (12.9%) | 0.058 | 39 (15.6%) | 32 (12.8%) | 0.080 |
| Chronic liver disease, n (%) | 5 (1.8%) | 10 (1.9%) | –0.009 | 4 (1.6%) | 4 (1.6%) | 0.000 |
| Cerebrovascular diseases, n (%) | 18 (6.4%) | 27 (5.1%) | 0.055 | 18 (7.2%) | 15 (6.0%) | 0.048 |
| Chronic renal diseases, n (%) | 17 (6.0%) | 17 (3.2%) | 0.134 | 13 (5.2%) | 9 (3.6%) | 0.078 |
| COPD, n (%) | 4 (1.4%) | 8 (1.5%) | –0.008 | 4 (1.6%) | 3 (1.2%) | 0.034 |
| Chest CT on Admission | | | | | | |
| Q12 Unilateral lesion, n/N (%) | 25/266 (9.4%) | 22/468 (4.7%) | 0.184 | 19/239 (8.0%) | 18/212 (8.5%) | –0.020 |
| Bilateral lesions, n/N (%) | 230/266 (86.5%) | 425/468 (90.8%) | –0.137 | 210/239 (87.9%) | 184/212 (86.8%) | 0.032 |
| Laboratory Examination on Admission | | | | | | |
| Leukocyte count > 9.5, 10 ⁹ /L, n/N (%) | 17/272 (6.3%) | 61/500 (12.2%) | –0.207 | 15/242 (6.2%) | 18/231 (7.8%) | –0.063 |
| Neutrophil count > 6.3, 10 ⁹ /L, n/N (%) | 29/272 (10.7%) | 97/500 (19.4%) | –0.246 | 28/242 (11.6%) | 24/231 (10.4%) | 0.038 |
| Lymphocyte count < 1.1, 10 ⁹ /L, n/N (%) | 83/272 (30.5%) | 248/500 (49.6%) | –0.397 | 81/242 (33.5%) | 85/231 (36.8%) | –0.070 |
| ■ ■ ■ ■ | | | | | | |
| C-reactive protein increase > ULN ^a , n/N (%) | 103/217 (47.5%) | 209/351 (59.5%) | –0.244 | 97/195 (49.7%) | 78/166 (47.0%) | 0.055 |
| Procalcitonin level increase > ULN ^a , n/N (%) | 51/211 (24.2%) | 143/409 (35.0%) | –0.238 | 48/188 (25.5%) | 40/180 (22.2%) | 0.078 |

(Continued on next page)

Table 1. Continued

| Parameters | Unmatched | | Matched (1:1) | | SD |
|---|---------------------------|-----------------------------|---------------------------|-----------------------------|--------|
| | Well Controlled (n = 282) | Poorly Controlled (n = 528) | Well Controlled (n = 250) | Poorly Controlled (n = 250) | |
| ALT increase > 40 U/L, n/N (%) | 31/266 (11.7%) | 80/476 (16.8%) | 27/235 (11.5%) | 22/219 (10.1%) | 0.047 |
| AST increase > 40 U/L, n/N (%) | 30/266 (11.3%) | 97/476 (20.4%) | 30/235 (12.8%) | 25/219 (11.4%) | 0.041 |
| Creatinine > ULN ^a , n/N (%) | 20/267 (7.5%) | 68/498 (13.7%) | 20/237 (8.4%) | 15/231 (6.5%) | 0.074 |
| D-dimer > ULN ^a , n/N (%) | 88/234 (37.6%) | 252/455 (55.4%) | 83/208 (39.9%) | 91/206 (44.2%) | -0.087 |
| K ⁺ < 3.5 mmol/L, n/N (%) | 38/266 (14.3%) | 73/496 (14.7%) | 36/235 (15.3%) | 32/228 (14.0%) | 0.036 |
| LDL-c, mmol/L, median (IQR) | 2.5 (1.9–3.0) | 2.4 (1.9–2.9) | 2.4 (1.9–3.0) | 2.4 (1.9–2.9) | -0.020 |
| SpO ₂ , <95%, n/N (%) | 26/206 (12.6%) | 94/414 (22.7%) | 26/182 (14.3%) | 27/189 (14.3%) | 0.000 |
| Blood glucose, mmol/L, median (IQR) | 6.4 (5.2–7.5) | 10.9 (7.6–14.3) | 6.4 (5.2–7.4) | 10.6 (7.4–13.7) | -1.329 |

SBP, systolic blood pressure; DBP, diastolic blood pressure; COPD, chronic obstructive pulmonary disease; ALT, alanine transaminase; AST, aspartate transaminase; IQR, interquartile range; SD, standardized difference.

^aUpper limit of normal (ULN) was defined according to criteria in each hospital

procalcitonin (24.2% versus 35.0%). The same pattern was observed for elevated aspartate transaminase (AST) (11.3% versus 20.4%) and D-dimer (37.6% versus 55.4%) (Table 1). Notably, fewer individuals from the well-controlled group had SpO₂ lower than 95% compared to the poorly controlled group (12.6% versus 22.7%). But other parameters between the two groups were not significantly different. In particular, these two groups had a median age of 62 (IQR, 55–67) and 63 (IQR, 56–68), respectively (Table 1; Figure S3). The difference of the median BMI between patients with well-controlled BG or poorly controlled BG was modest (25.0 [IQR, 23.9–26.4] versus 23.2 [IQR, 21.0–24.9], respectively).

Other clinical manifestations, including chest CT imaging and the incidences of major comorbidities, were similar between the two groups on admission. Even so, the patients with COVID-19 and T2D with well-controlled BG acquired significantly less integrated treatments than those with poorly controlled BG. There was a significantly lower frequency of pharmacological therapy in the well-controlled BG group versus the poorly controlled group, including the usage of antivirals (62.8% versus 71.2%), antibiotics (53.2% versus 66.5%), antifungal drugs (0.4% versus 2.8%), systemic corticosteroids (20.2% versus 34.9%), immunoglobulin (15.3% versus 26.5%), and vasoactive drugs (2.5% versus 8.9%). The incidences of oxygen inhalation (70.2% versus 83.5%), noninvasive ventilation (4.6% versus 11.9%), invasive ventilation (0.0% versus 4.2%), and extracorporeal membrane oxygenation (0.0% versus 0.8%) were lower in the well-controlled group than in the poorly controlled group (Table 2).

Well-Controlled Blood Glucose Is Correlated with Reduced Risk of All-Cause Mortality and Detrimental Complications in Patients with COVID-19 and Pre-existing T2D

Correlated with persistent lower BG levels, the well-controlled group had higher lymphocyte counts, lower neutrophil counts, and lower serum levels of IL-6, CRP, and LDH throughout the 28-day observation period starting from the time of hospital admission (Figure 2). We further noticed that the in-hospital death rate was significantly lower (1.1% versus 11.0%) in the well-controlled group relative to the poorly controlled group (Table S5). The crude HR for the 28-day all-cause mortality between the two groups was 0.09 (95% CI, 0.03–0.30; p < 0.001) (Table S6). After adjusting for age, gender, the severity of COVID-19, comorbidities, and site effect, the HR of the all-cause mortality in the well-controlled BG group versus the poorly controlled BG group was 0.13 (95% CI, 0.04–0.44; p < 0.001) (Table S6). The E-value for the point estimate was 14.87 with upper limit of CI at 3.97. Further, relative to the poorly controlled BG control, the patients from the well-controlled BG group developed less frequent occurrences of ARDS (7.1% versus 21.4%), acute heart injury (1.4% versus 9.9%), acute kidney injury (0.7% versus 3.8%), septic shock (0.0% versus 4.7%), and DIC (0.0% versus 0.6%) (Table S5). After adjusting for age, gender, the severity of COVID-19, and comorbidities, the respective HRs of ARDS and acute heart injury were 0.41 (95% CI, 0.25–0.66, p < 0.001) and 0.21 (95% CI, 0.07–0.59, p =

Table 2. In-Hospital Management of Patients with COVID-19 in the Well-Controlled or Poorly Controlled BG Group

| Management | Total (N = 810) | Well Controlled (n = 282) | Poorly Controlled (n = 528) | p Value |
|---|-----------------|---------------------------|-----------------------------|---------|
| Traditional Chinese medicine (%) | 650 (80.3%) | 235 (83.3%) | 415 (78.6%) | 0.129 |
| Antiviral drug, n (%) | 553 (68.3%) | 177 (62.8%) | 376 (71.2%) | 0.017 |
| Antibiotics drug, n (%) | 501 (61.9%) | 150 (53.2%) | 351 (66.5%) | <0.001 |
| Systemic corticosteroids, n (%) | 241 (29.8%) | 57 (20.2%) | 184 (34.9%) | <0.001 |
| Immunoglobulin, n (%) | 183 (22.6%) | 43 (15.3%) | 140 (26.5%) | <0.001 |
| Anti-hypertensive drug, n (%) | 380 (46.9%) | 128 (45.4%) | 252 (47.7%) | 0.575 |
| Lipid-lowering drug, n (%) | 126 (15.6%) | 40 (14.2%) | 86 (16.3%) | 0.493 |
| Vasoactive drug, n (%) | 54 (6.7%) | 7 (2.5%) | 47 (8.9%) | 0.001 |
| Antifungal medications, n (%) | 16 (2.0%) | 1 (0.4%) | 15 (2.8%) | 0.031 |
| Metformin, n (%) | 278 (34.3%) | 76 (27.0%) | 202 (38.3%) | 0.002 |
| Sulfonylurea, n (%) | 106 (13.1%) | 22 (7.8%) | 84 (15.9%) | 0.002 |
| DPP-4 inhibitor, n (%) | 55 (6.8%) | 11 (3.9%) | 44 (8.3%) | 0.025 |
| Insulin, n (%) | 328 (40.5%) | 40 (14.2%) | 288 (54.6%) | <0.001 |
| Alpha-glucosidase inhibitor, n (%) | 337 (41.6%) | 90 (31.9%) | 247 (46.8%) | <0.001 |
| Trizaolidinedione, n (%) | 9 (1.1%) | 2 (0.7%) | 7 (1.3%) | 0.508 |
| Meglitide | 35 (4.3%) | 7 (2.5%) | 28 (5.3%) | 0.089 |
| Oxygen inhalation, n (%) | 639 (78.9%) | 198 (70.2%) | 441 (83.5%) | <0.001 |
| Noninvasive ventilation, n (%) ^a | 76 (9.4%) | 13 (4.6%) | 63 (11.9%) | 0.001 |
| Invasive ventilation, n (%) ^a | 22 (2.7%) | 0 (0.0%) | 22 (4.2%) | 0.001 |
| Renal replacement therapy, n (%) | 15 (1.9%) | 5 (1.8%) | 10 (1.9%) | 1.000 |
| Extracorporeal membrane oxygenation, n (%) ^a | 4 (0.5%) | 0 (0.0%) | 4 (0.8%) | 0.304 |

^aNoninvasive ventilation, invasive ventilation, and extracorporeal membrane oxygenation are mutually exclusive

0.003) between the well-controlled BG group and poorly controlled BG group (Table S6).

A propensity score-matched (PSM) analysis was further performed to avoid confounding variables that could have interfered

with the association between BG levels and all-cause mortality. Due to the lack of reliable indicators for the severity of T2D, we specifically included T2D-related comorbidities for matching since comorbidities are closely related to the severity of T2D.

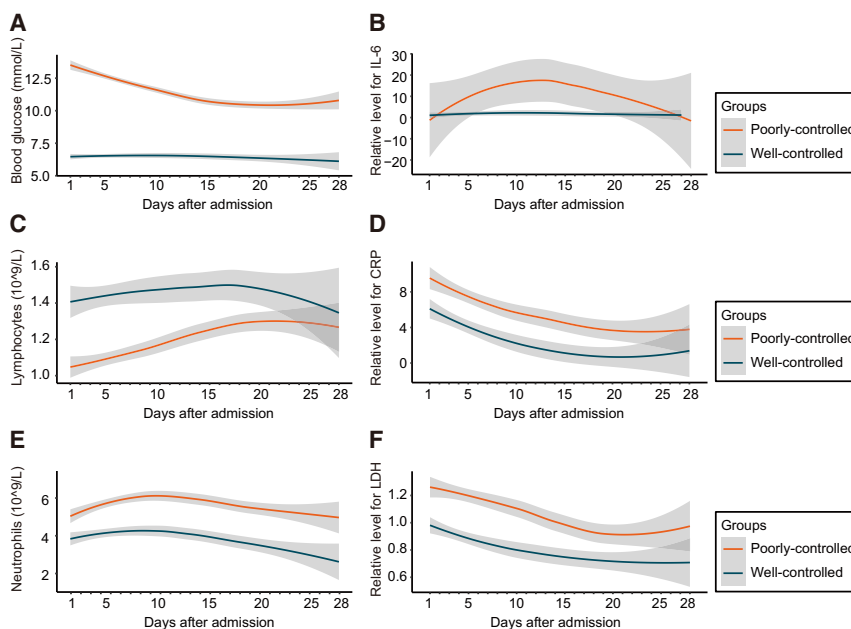
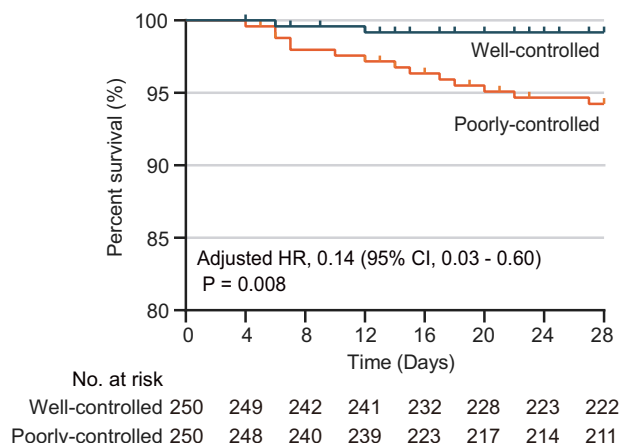


Figure 2. Dynamics of BG, Lymphocytes, Neutrophils, IL-6, CRP, and LDH in Well-Controlled and Poorly Controlled BG Groups during Hospitalization

Dynamic trajectories of blood glucose (A), lymphocytes (C), and neutrophils (E), and relative levels for IL-6 (B), CRP (D), and LDH (F) during the 28-day follow-up duration, with 95% confidence interval represented by shaded regions, in patients with poorly controlled BG (orange) or patients with well-controlled BG (blue). The BG represents the averaged median BG of patients on the day tested.



Q11 Figure 3. ■ ■ ■ ■

Kaplan-Meier Curves for cumulative probability of COVID-19 mortality during the 28-day follow-up duration in the well-controlled BG (blue) or poorly controlled BG (orange) cohort among 500 patients with T2D in the PSM model. The blips on the curve indicate censoring of cases during 28 days of follow-up.

These comorbidities included hypertension, cardiovascular disease, cerebrovascular disease, and chronic kidney injury. We were able to match 250 patients from the well-controlled BG group to 250 patients from the poorly controlled BG group at a ratio of 1:1, and these 500 individuals were included in the PSM analysis (Figure 1). By applying mixed-effect Cox model using the hospital site as a random effect and adjusting imbalanced durations from symptom onset to admission, the results consistently and significantly demonstrated a lower risk of all-cause mortality in the patients from the well-controlled BG group (adjusted HR, 0.14; 95% CI, 0.03–0.60; $p = 0.008$) compared to those from the poorly controlled BG group (Figure 3; Tables 3 and S7), although stronger integrated treatment was applied to the poorly controlled BG group (Table S8). The robustness of the association between glycemic variability and mortality was further assessed with additional sensitivity analyses by using different matching variables. The results in these sensitivity analyses were similar to the above analysis with HRs of 0.17 (95% CI, 0.05–0.61; $p = 0.006$) in the first sensitivity analysis and of 0.16 (95% CI, 0.05–0.58; $p = 0.005$) in the second analysis (Table S9). In the PSM analysis, the respective adjusted HRs of ARDS, acute heart injury, and acute kidney injury were 0.47 (95% CI, 0.27–0.83, $p = 0.009$), 0.24 (95% CI, 0.08–0.71, $p = 0.010$), and 0.12 (95% CI, 0.01–0.96, $p = 0.046$) between the well-controlled BG group and poorly controlled BG group (Table 3).

Glycemic variability has been shown to be an important indicator and a possible risk predictor for death and other complications in individuals with T2D (Forbes et al., 2018). The impact of hyperglycemia on the pathogenesis of viral-induced respiratory diseases remains unclear. Elevated BG level has been reported to increase the glucose concentration in airway epithelial secretion (Philips et al., 2003), which may disrupt the defensive capacity of airway epithelia. On the other hand, too rigid glucose control increases the risk of severe hypoglycemia, which can also result in an increased mortality (Rodriguez-Gutierrez et al., 2019). In this study, we found that compared to individuals

with well-controlled BG, poor glycemic control in patients with COVID-19 and pre-existing T2D was associated with worse outcome, involving increased need for medical interventions, multi-organ injuries, and higher mortalities. In contrast to such patients, in those with glycemic variability between 3.9 and 10.0 mmol/L there was a significant association with reduced medical interventions, major organ injuries, and all-cause mortality. The findings here provide direct evidence supporting the recent suggestions for clinical management of T2D during COVID-19 (Bornstein et al., 2020).

Conclusions

In conclusion, T2D is an important risk factor for COVID-19 progression and adverse endpoints, and well-controlled BG, maintaining glycemic variability within 3.9 to 10.0 mmol/L, is associated with a significant reduction in the composite adverse outcomes and death. These findings provide critical insights into the clinical characteristics of patients with COVID-19 and pre-existing T2D and the possible avenues to improving their disease outcomes.

Limitations of Study

Due to the retrospective nature of the study and the unprecedented scale of the COVID-19 pandemic, this study has several limitations. First, all data were obtained from patient cohorts admitted in the 19 hospitals in Hubei Province, China. Therefore, the effect of BG control may be different among patients with COVID-19 and pre-existing T2D in the outpatient setting or in ethnically or geographically diverse populations. Second, we were not able to retrieve the pre-hospital status of T2D from the current cohort due to the urgent circumstance of the COVID-19 pandemic. The status of pre-hospital T2D could be significantly associated with numerous clinical parameters, which are known independent risk factors for the poor outcomes of COVID-19, including cardiovascular abnormalities and immunological dysfunction. While we performed PSM analysis to support the independent association of T2D with COVID-19 pathology, the influence from these cofounders cannot be fully excluded. Also, given this lack of pre-hospital data, it was not possible for us to access if BG levels changed as result of COVID-19 progression and/or severity. Third, the number of the patients with T2D and well-controlled BG in this study was modest and might not be powered sufficiently to reflect the overall complexity of the general population. Therefore, large-scale prospective cohort studies will be required in ethnically and geographically diverse cohorts to better understand the association and importance of BG control in the disease progression of COVID-19. Fourth, given the retrospective nature of the study, it was not possible for us to determine if active management of BG levels to a more normal range could ameliorate COVID-19 severity or adverse outcomes. Finally, individuals with type 1 diabetes were excluded from our analysis as there were too few of them in the initial cohort, but it is possible that blood glucose control may also affect their outcomes during COVID-19.

STAR★METHODS

Detailed methods are provided in the online version of this paper and include the following:

Table 3. Hazard Ratios for Outcomes in Well-Controlled and Poorly Controlled BG Cohorts under Cox Adjusted Model and Propensity Score-Matching Model

| Well Controlled versus Poorly Controlled | Unmatched | | Adjusted ^a | | Matched ^b | |
|--|----------------------|----------------------|-----------------------|----------------------|--------------------------------------|----------------------|
| | Crude HR (95% CI) | p Value ^c | HR (95% CI) | p Value ^c | Adjusted ^a HR (95% CI) | p Value ^c |
| All-cause mortality | 0.09 (0.03,0.30) | <0.001 | 0.13 (0.04,0.44) | <0.001 | 0.14 (0.03,0.60) | 0.008 |
| Septic shock | – | – | – | – | – | – |
| ARDS | 0.31 (0.19,0.50) | <0.001 | 0.41 (0.25,0.66) | <0.001 | 0.47 (0.27,0.83) | 0.009 |
| DIC | – | – | – | – | – | – |
| Acute kidney injury | 0.19 (0.04,0.80) | 0.024 | 0.22 (0.05,1.03) | 0.055 | 0.12 (0.01,0.96) | 0.046 |
| Acute heart injury | 0.14 (0.05,0.39) | <0.001 | 0.21 (0.07,0.59) | 0.003 | 0.24 (0.08,0.71) | 0.010 |

HR, hazard ratio; CI, confidence interval.

^aIn adjusted Cox model, adjusted variables for comparing BG satisfied and BG unsatisfied cohorts included age, gender, indicators of the severity of COVID-19, and comorbidities (hypertension, coronary heart disease, cerebrovascular diseases, chronic liver diseases, and chronic renal diseases)

^bIn the propensity score-matched model, age, gender, hospital sites, indicators of the severity of COVID-19, comorbidities (hypertension, coronary heart disease, and chronic renal diseases), and incidence of increased creatinine were matched, followed by mixed-effect Cox model using the hospital site as a random effect and adjusting imbalanced durations from symptom onset to admission

^cp values were calculated based on Cox proportional hazard model

- **KEY RESOURCES TABLE**
- **RESOURCE AVAILABILITY**
 - Lead Contact
 - Materials Availability
 - Data and Code Availability
- **METHOD DETAILS**
 - Study Design and Participants
 - Data Collection
 - Definition
 - Propensity Score-Matched Analysis
 - Sensitivity Analysis
- **QUANTIFICATION AND STATISTICAL ANALYSIS**

DECLARATION OF INTERESTS

The authors declare no competing interests.

Received: April 20, 2020

Revised: April 26, 2020

Accepted: April 28, 2020

Published: May 4, 2020

REFERENCES

Alqahtani, F.Y., Aleanizy, F.S., Ali El Hadi Mohamed, R., Alanazi, M.S., Mohamed, N., Alrasheed, M.M., Abanmy, N., and Alhawassi, T. (2018). Prevalence of comorbidities in cases of Middle East respiratory syndrome coronavirus: a retrospective study. *Epidemiol. Infect.* *147*, e35.

Booth, C.M., Matukas, L.M., Tomlinson, G.A., Rachlis, A.R., Rose, D.B., Dwosh, H.A., Walmsley, S.L., Mazzulli, T., Avendano, M., Derkach, P., et al. (2003). Clinical features and short-term outcomes of 144 patients with SARS in the greater Toronto area. *JAMA* *289*, 2801–2809.

Bornstein, S.R., Rubino, F., Khunti, K., Mingrone, G., Hopkins, D., Birkenfeld, A.L., Boehm, B., Amiel, S., Holt, R.I., Skyler, J.S., et al. (2020). Practical recommendations for the management of diabetes in patients with COVID-19. *Lancet Diabetes Endocrinol.* Published online April 23, 2020. [https://doi.org/10.1016/S2213-8587\(20\)30152-2](https://doi.org/10.1016/S2213-8587(20)30152-2).

Candido, R., Jandeleit-Dahm, K.A., Cao, Z., Nesteroff, S.P., Burns, W.C., Twigg, S.M., Dilley, R.J., Cooper, M.E., and Allen, T.J. (2002). Prevention of accelerated atherosclerosis by angiotensin-converting enzyme inhibition in diabetic apolipoprotein E-deficient mice. *Circulation* *106*, 246–253.

Chen, N., Zhou, M., Dong, X., Qu, J., Gong, F., Han, Y., Qiu, Y., Wang, J., Liu, Y., Wei, Y., et al. (2020). Epidemiological and clinical characteristics of 99 cases of 2019 novel coronavirus pneumonia in Wuhan, China: a descriptive study. *Lancet* *395*, 507–513.

Chinese Diabetes Society (2018). Guidelines for the prevention and control of type 2 diabetes in China (2017 Edition). *Zhongguo Shiyong Neike Zazhi* *38*, 53.

Deng, S.Q., and Peng, H.J. (2020). Characteristics of and public health responses to the coronavirus disease 2019 outbreak in China. *J. Clin. Med.* *9*, E575.

Forbes, A., Murrells, T., Mulnier, H., and Sinclair, A.J. (2018). Mean HbA_{1c}, HbA_{1c} variability, and mortality in people with diabetes aged 70 years and older: a retrospective cohort study. *Lancet Diabetes Endocrinol.* *6*, 476–486.

Q17 SUPPLEMENTAL INFORMATION

Supplemental Information can be found online at <https://doi.org/10.1016/j.cmet.2020.04.021>.

ACKNOWLEDGMENTS

This work was supported by grants from the National Key R&D Program of China (2016YFF0101504 to Z.-G.S.), the National Science Foundation of China (81630011 to H.L., 81970364 to Z.-G.S., 81970070 to X.-J.Z., 81970011 to P.Z., and 81870171 to J.C.), the Major Research Plan of the National Natural Science Foundation of China (91639304 to H.L.), the Hubei Science and Technology Support Project (2019BFC582 to H.L., 2018BEC473 to H.L., and 2017BEC001 to H.L.), and Medical Flight Plan of Wuhan University.

Q10 AUTHOR CONTRIBUTIONS

L.Z., Z.-G.S., X.C., and J.-J.Q. designed study, collected and analyzed data, and wrote manuscript. H.W., W.W., P.Z., X.S., C.Z., L.B., D.X., M.-M.C., Y.L., Y. Yan, M.L., W.M., J.Z., L.L., G.C., P.L., B.X., Z.Z., Z.L., J.W., H.L., X.X., D.W., X.L., G.P., P.Y., J.Y., and Y. Yuan collected and revised clinical, laboratory, and radiological data. F.L. and H.L. performed statistical analysis. J.X., X.C., and M.X. reviewed, interpreted, and checked clinical data. X.-J.Z. and J.C. wrote the manuscript and provided valuable suggestions for study design and data analysis. X.H., J.G., B.-H.Z., and Hongliang Li contributed equally, designed the project, edited manuscript, and supervised the study. All authors have approved the final version of this paper.

- Fuso, L., Pitocco, D., and Antonelli-Incalzi, R. (2019). Diabetic lung, an under-rated complication from restrictive functional pattern to pulmonary hypertension. *Diabetes Metab. Res. Rev.* 35, e3159.
- Gando, S., Wada, H., and Thachil, J.; Scientific and Standardization Committee on DIC of the International Society on Thrombosis and Haemostasis (ISTH) (2013). Differentiating disseminated intravascular coagulation (DIC) with the fibrinolytic phenotype from coagulopathy of trauma and acute coagulopathy of trauma-shock (COT/ACOTS). *J. Thromb. Haemost.* 11, 826–835.
- Guan, W.-J., Ni, Z.-Y., Hu, Y., Liang, W.-H., Ou, C.-Q., He, J.-X., Liu, L., Shan, H., Lei, C.-L., Hui, D.-S.C., et al.; China Medical Treatment Expert Group for Covid-19 (2020). Clinical characteristics of coronavirus disease 2019 in China. *N. Engl. J. Med.* Published online February 28, 2020. <https://doi.org/10.1056/NEJMoa2002032>.
- Haneuse, S., VanderWeele, T.J., and Arterburn, D. (2019). Using the E-value to assess the potential effect of unmeasured confounding in observational studies. *JAMA* 321, 602–603.
- Hoffmann, M., Kleine-Weber, H., Schroeder, S., Krüger, N., Herrler, T., Erichsen, S., Schiergens, T.S., Herrler, G., Wu, N.H., Nitsche, A., et al. (2020). SARS-CoV-2 cell entry depends on ACE2 and TMPRSS2 and is blocked by a clinically proven protease inhibitor. *Cell* 181, 271–280.e8.
- Huang, C., Wang, Y., Li, X., Ren, L., Zhao, J., Hu, Y., Zhang, L., Fan, G., Xu, J., Gu, X., et al. (2020). Clinical features of patients infected with 2019 novel coronavirus in Wuhan, China. *Lancet* 395, 497–506.
- Kellum, J.A., Lameire, N., Aspelin, P., Barsoum, R.S., Burdmann, E.A., Goldstein, S.L., Herzog, C.A., Joannidis, M., Kribben, A., Levey, A.S., et al. (2012). Kidney disease: improving global outcomes (KDIGO) acute kidney injury work group. KDIGO clinical practice guideline for acute kidney injury. *Kidney Int. Suppl.* 2, 1–138.
- Kuba, K., Imai, Y., Rao, S., Gao, H., Guo, F., Guan, B., Huan, Y., Yang, P., Zhang, Y., Deng, W., et al. (2005). A crucial role of angiotensin converting enzyme 2 (ACE2) in SARS coronavirus-induced lung injury. *Nat. Med.* 11, 875–879.
- Kulcsar, K.A., Coleman, C.M., Beck, S.E., and Frieman, M.B. (2019). Comorbid diabetes results in immune dysregulation and enhanced disease severity following MERS-CoV infection. *JCI Insight* 4, 131774.
- Kumar Nathella, P., and Babu, S. (2017). Influence of diabetes mellitus on immunity to human tuberculosis. *Immunology* 152, 13–24.
- Lu, R., Zhao, X., Li, J., Niu, P., Yang, B., Wu, H., Wang, W., Song, H., Huang, B., Zhu, N., et al. (2020). Genomic characterisation and epidemiology of 2019 novel coronavirus: implications for virus origins and receptor binding. *Lancet* 395, 565–574.
- Marrone, G., Vaccaro, F.G., Biolato, M., Miele, L., Liguori, A., Araneo, C., Ponziani, F.R., Mores, N., Gasbarrini, A., and Grieco, A. (2017). Drug-induced liver injury 2017: the diagnosis is not easy but always to keep in mind. *Eur. Rev. Med. Pharmacol. Sci.* 21 (Suppl), 122–134.
- Mathur, M.B., Ding, P., Riddell, C.A., and VanderWeele, T.J. (2018). Web site and R package for computing E-values. *Epidemiology* 29, e45–e47.
- National Health Commission of China (2020). New Coronavirus Pneumonia Prevention and Control Program (National Health Commission of China). <http://www.nhc.gov.cn>.
- Philips, B.J., Meguer, J.X., Redman, J., and Baker, E.H. (2003). Factors determining the appearance of glucose in upper and lower respiratory tract secretions. *Intensive Care Med.* 29, 2204–2210.
- Rodriguez-Gutierrez, R., Gonzalez-Gonzalez, J.G., Zuñiga-Hernandez, J.A., and McCoy, R.G. (2019). Benefits and harms of intensive glycemic control in patients with type 2 diabetes. *BMJ* 367, l5887.
- Van den Berghe, G., Wilmer, A., Hermans, G., Meersseman, W., Wouters, P.J., Milants, I., Van Wijngaerden, E., Bobbaers, H., and Bouillon, R. (2006). Intensive insulin therapy in the medical ICU. *N. Engl. J. Med.* 354, 449–461.
- VanderWeele, T.J., and Ding, P. (2017). Sensitivity analysis in observational research: introducing the E-value. *Ann. Intern. Med.* 167, 268–274.
- Waljee, A.K., Mukherjee, A., Singal, A.G., Zhang, Y., Warren, J., Balis, U., Marrero, J., Zhu, J., and Higgins, P.D. (2013). Comparison of imputation methods for missing laboratory data in medicine. *BMJ Open* 3, e002847.
- Wang, L., Gao, P., Zhang, M., Huang, Z., Zhang, D., Deng, Q., Li, Y., Zhao, Z., Qin, X., Jin, D., et al. (2017). Prevalence and ethnic pattern of diabetes and prediabetes in China in 2013. *JAMA* 317, 2515–2523.
- Wang, D., Hu, B., Hu, C., Zhu, F., Liu, X., Zhang, J., Wang, B., Xiang, H., Cheng, Z., Xiong, Y., et al. (2020). Clinical characteristics of 138 hospitalized patients with 2019 novel coronavirus-infected pneumonia in Wuhan, China. *JAMA*. Published online February 7, 2020. <https://doi.org/10.1001/jama.2020.1585>.
- World Health Organization (2020). Laboratory testing for 2019 novel coronavirus (2019-nCoV) in suspected human cases: interim guidance (World Health Organization).
- Wu, Z., and McGoogan, J.M. (2020). Characteristics of and important lessons from the coronavirus disease 2019 (COVID-19) outbreak in China: summary of a report of 72 314 cases from the Chinese Center for Disease Control and Prevention. *JAMA*. Published online February 24, 2020. <https://doi.org/10.1001/jama.2020.2648>.
- Xu, M., Liu, P.P., and Li, H. (2019). Innate immune signaling and its role in metabolic and cardiovascular diseases. *Physiol. Rev.* 99, 893–948.
- Yang, J.K., Feng, Y., Yuan, M.Y., Yuan, S.Y., Fu, H.J., Wu, B.Y., Sun, G.Z., Yang, G.R., Zhang, X.L., Wang, L., et al. (2006). Plasma glucose levels and diabetes are independent predictors for mortality and morbidity in patients with SARS. *Diabet. Med.* 23, 623–628.
- Zhang, J.J., Dong, X., Cao, Y.Y., Yuan, Y.D., Yang, Y.B., Yan, Y.Q., Akdis, C.A., and Gao, Y.D. (2020a). Clinical characteristics of 140 patients infected with SARS-CoV-2 in Wuhan, China. *Allergy*. Published online February 19, 2020. <https://doi.org/10.1111/all.14238>.
- Zhang, P., Zhu, L., Cai, J., Lei, F., Qin, J.J., Xie, J., Liu, Y.M., Zhao, Y.C., Huang, X., Lin, L., et al. (2020b). Association of inpatient use of angiotensin converting enzyme inhibitors and angiotensin II receptor blockers with mortality among patients with hypertension hospitalized with COVID-19. *Circ. Res.* Published online April 17, 2020. <https://doi.org/10.1161/CIRCRESAHA.120.317134>.
- Zhou, F., Yu, T., Du, R., Fan, G., Liu, Y., Liu, Z., Xiang, J., Wang, Y., Song, B., Gu, X., et al. (2020). Clinical course and risk factors for mortality of adult inpatients with COVID-19 in Wuhan, China: a retrospective cohort study. *Lancet* 395, 1054–1062.
- Zhu, N., Zhang, D., Wang, W., Li, X., Yang, B., Song, J., Zhao, X., Huang, B., Shi, W., Lu, R., et al.; China Novel Coronavirus Investigating and Research Team (2020). A novel coronavirus from patients with pneumonia in China, 2019. *N. Engl. J. Med.* 382, 727–733.

Q6 Q7 STAR★METHODS

KEY RESOURCES TABLE

| REAGENT or RESOURCE | SOURCE | IDENTIFIER |
|---------------------------|--|---|
| Software and Algorithms | | |
| R-3.6.3 | R Foundation for Statistical Computing | https://www.r-project.org/ |
| Graphpad Prism 8 | Graphpad | https://www.graphpad.com/ |
| SPSS statistics 23.0 | IBM Corporation | http://www.spss.com.hk/software/statistics/ |
| Adobe illustrator CC 2019 | Adobe company | https://www.adobe.com/cn |
| Q14 Coxme-2.2.16 | Therneau et al., 2003 | https://cran.r-project.org/web/packages/coxme/index.html |
| Q15 MatchIt-3.0.2 | Daniel et al., 2007 | https://cran.r-project.org/web/packages/MatchIt/ |
| Q16 Matching-4.9-7 | Sekhon et al., 2011 | https://cran.r-project.org/web/packages/Matching/ |
| Tableone-0.11.1 | Kazuki Yoshida | https://github.com/kaz-yos/tableone |

RESOURCE AVAILABILITY

Lead Contact

Further information and requests for resources and reagents should be directed to the Lead Contact, Hongliang Li (lihl@whu.edu.cn).

Materials Availability

The study did not generate any new reagents or materials.

Data and Code Availability

Data related to the findings of this study will be available from the corresponding author upon reasonable request. The research team will provide an email address for communication once the data are approved to be shared with others. The proposal with detailed aims, statistical plan, and other information/materials may be required to guarantee the rationality of requirement and the security of the data. The patient-level data, but without names and other identifiers, will be shared after review and approval of the submitted proposal and any related requested materials.

METHOD DETAILS

Study Design and Participants

This was a multi-centered, retrospective cohort study and the study protocol was approved by the Institution Ethic Committee of Renmin Hospital of Wuhan University and Zhongnan Hospital of Wuhan University. The study design was also individually approved by the institutional ethics boards of each collaborating hospital. Given the urgency of the COVID-19 pandemic, the informed consent forms were waived by the ethics boards of the hospitals.

The study subjects included patients with COVID-19 hospitalized between December 30th, 2019 and March 20th, 2020. COVID-19 was diagnosed based on chest computed tomography (CT) manifestations and/or reverse transcription-polymerase chain reaction (RT-PCR) following the criteria of the New Coronavirus Pneumonia Prevention and Control Program (5th edition) published by the National Health Commission of China and WHO interim guidance ([National Health Commission of China, 2020](#); [World Health Organization, 2020](#); [Zhang et al., 2020b](#)). A total of 9663 patients with COVID-19 were initially screened for the study. Data from individuals, however, were excluded if the subjects were younger than 18 or older than 75 or had incomplete medical records (e.g., transfer to any other hospital), acute lethal organ injury (e.g., acute myocardial infarction, acute coronary syndrome, acute pulmonary embolism, or acute stroke), decompensated or end stage of chronic organ dysfunction (e.g., decompensated cirrhosis, decompensated chronic renal insufficiency, severe congestive heart failure), pregnancy, T1D or malignancy. For further study, the remaining cohort (n = 7337) was categorized into diabetic (n = 952) and non-diabetic (n = 6385) groups, according to the clinical diagnosis and/or medical history on admission ([Figure 1](#)).

Data Collection

The medical records of patients were analyzed by an integrated research team, including physicians, data scientists and statisticians. After deidentification process by removing the personal information (e.g., name and ID) of the participants and designating

using a coding system, the basic information, epidemiological records, clinical manifestations, laboratory findings, radiographic characteristics from CT, treatments and outcomes during hospitalization were recorded. Major clinical symptoms (i.e., fever, cough, fatigue, dyspnea and comorbidities) were collected. The laboratory findings included routine blood test, fasting blood glucose (BG) and 2 h postprandial BG (2 hPG), C-reactive protein (CRP), procalcitonin, D-dimer, and serum indicators for liver injury, kidney injury and heart dysfunction. An experienced physician team reviewed, interpreted and double-checked all data to guarantee the accuracy.

Definition

The date of disease onset was defined as the day when the first symptom of COVID-19 was noticed. Severe cases were defined according to whether the patients had indication of respiratory rate > 30 breaths/min, or $SpO_2 \leq 93\%$ on room air, or $PaO_2/FiO_2 \leq 300$ mmHg. T2D status was designated based on the patient's medical history and guideline for the prevention and control of T2D in China (2017) (Chinese Diabetes Society, 2018). The timing and frequency of obtaining the fasting and 2-h postprandial BG (2 hPG) varied between individuals, depending on the necessity related to the severity of the comorbid T2D. Severe T2D status accordingly obtained more frequent BG surveillances. Glycemic variability was defined as the range between the lowest fasting BG (FBG) and 2 hPG level during the observation period. Well-controlled BG was defined when glycemic variability ranged from 3.9 to 10.0 mmol/L since the normal range of fasting BG is 3.9 - 6.1 mmol/L and lower than 10 mmol/L is the targeting level of 2 hPG in DM management according to the guideline for the prevention and control of T2D in China (2017) (Chinese Diabetes Society, 2018). Poorly-controlled BG was defined when the lowest fasting BG was above or equal 3.9 mmol/L and the highest 2 hPG level exceeded 10.0 mmol/L during the observation window.

Hypertension was diagnosed when systolic blood pressure is equal or above to 140 mm Hg and/or diastolic blood pressure is equal or above 90 mm Hg. ARDS and septic shock were defined following WHO interim guideline for "clinical management of severe acute respiratory infection when novel coronavirus (2019-nCoV) infection is suspected." Cardiac injury was defined when the serum level of cardiac injury biomarkers [cardiac troponin I (cTNI), cardiac troponin T (cTNT), or high sensitivity cardiac troponin I (hs-cTNI)] were higher than the upper limit of normal (ULN). Acute liver injury was defined when an acutely increased level of serum alanine aminotransferase (ALT) and serum alkaline phosphatase (ALP) of upper limit of normal (ULN) was observed (Marrone et al., 2017). Acute kidney injury was indicated by the value of serum creatinine level when it reached or exceeded 26.5 μ mmol/L within 48 h (Kellum et al., 2012). Disseminated intravascular coagulation (DIC) was diagnosed according to the criteria published by the International Society on Thrombosis and Hemostasis (ISTH) (Gando et al., 2013). The primary endpoint of the study was 28-day all-cause death in COVID-19 patients. The secondary endpoints were occurrence of ARDS, septic shock, acute cardiac injury, acute kidney injury, or DIC.

Propensity Score-Matched Analysis

The variables potentially confounding the association between BG and the outcomes of COVID-19 were addressed using the propensity score-matching (PSM) method (Waljee et al., 2013). PSM requires a complete set of variables for every patient, randomly missing values of 10 selected parameters from noninvasive tests were therefore imputed. The non-parameter imputation method missForest was applied and the estimation of the imputation error was 4.08%. The bootstrapped cross validation was further applied and repeated 10 times for evaluating imputation performance on the training data after 10% more parameters were randomly introduced. The missForest method yielded 4.11% (IQR 1.91%–5.44%) differences between the datasets before and after parameters were introduced. The algorithm of the PSM is as follows:

Logistic(P) = $\ln[P/(1-P)] = \beta_0 + \beta_1X_1 + \beta_2X_2 + \dots + \beta_kX_k$ $p = e(\beta_0 + \beta_1X_1 + \beta_2X_2 + \dots + \beta_kX_k)/1 + e(\beta_0 + \beta_1X_1 + \beta_2X_2 + \dots + \beta_kX_k)$. The P in this formula is the predicted probability of glucose control procedure, and the beta value before each variable is the regression coefficient of that variable.

The variables potentially confounding the association between BG and the outcomes of COVID-19 were addressed using the PSM method. When evaluating the association of glucose control level and outcomes, the PSM cohorts were identified by balancing age, gender, fever, cough, dyspnea, CT-diagnosed lung lesions, SpO_2 , breath frequency, incidence of increased leukocyte count, ALT, AST, D-dimer, creatinine, CRP, procalcitonin and decreased of lymphocyte count, as well as comorbidities (hypertension, coronary artery disease, cerebrovascular disease, COPD, chronic liver diseases and chronic renal disease). The propensity score, a predicted probability of glucose change contributed by the above variables, were estimated based on multivariable logistic regression model. The matching ratio was at 1:1 for the cohort with well-controlled BG versus the cohort with poorly-controlled BG during the entire hospitalization. Exact matching with a caliper size of 0.05 was applied for all matching pairs according to the propensity scores. Evaluation of the balance between covariates was conducted by estimating standardized differences before and after matching. Only those with small absolute value less than 0.1 were considered qualified balancing.

Sensitivity Analysis

The robustness of the association between BG level and all-cause mortality was assessed by analyzing E-value in the Mixed-effect Cox proportional hazards model to address unmeasured confounders using the methodology of VanderWeele and Ding (Haneuse et al., 2019; Mathur et al., 2018; VanderWeele and Ding, 2017). Two sensitivity analyses were performed to evaluate the robustness of propensity score-matched cohort analyses, among all pairs.

QUANTIFICATION AND STATISTICAL ANALYSIS

All statistical analysis was performed using R-3.6.3 (R Foundation for Statistical Computing, Vienna, Austria) and SPSS Statistics (version 23.0, IBM, Armonk, NY, USA). Data with continuous variables were presented as median and interquartile range (IQR), and data with categorical variables were presented as frequency rates and percentage (%). Comparison between 2 groups was analyzed using Student's t tests (normally distributed) or Mann-Whitney U test (nonnormally distributed) for continuous variables. Comparison of categorical variables was analyzed by Fisher's exact test or χ^2 test. Generalized linear model (GLM) was performed to evaluate correlation between the median of blood glucose and factors related to viral infection or glycemic control in patients with diabetes. The risk for composite endpoints and corresponding hazard ratio (HR) were analyzed using Cox proportional hazard model. The cumulative rates of death were plotted by applying Kaplan-Meier method. A difference with a two-side α less than 0.05 was considered statistically significant.

Supplemental Information

Association of Blood Glucose Control and Outcomes in Patients with COVID-19 and Pre-existing Type 2 Diabetes

Lihua Zhu, Zhi-Gang She, Xu Cheng, Juan-Juan Qin, Xiao-Jing Zhang, Jingjing Cai, Fang Lei, Haitao Wang, Jing Xie, Wenxin Wang, Haomiao Li, Peng Zhang, Xiaohui Song, Xi Chen, Mei Xiang, Chaozheng Zhang, Liangjie Bai, Da Xiang, Ming-Ming Chen, Yanqiong Liu, Youqin Yan, Mingyu Liu, Weiming Mao, Jinjing Zou, Liming Liu, Guohua Chen, Pengcheng Luo, Bing Xiao, Changjiang Zhang, Zixiong Zhang, Zhigang Lu, Junhai Wang, Haofeng Lu, Xigang Xia, Daihong Wang, Xiaofeng Liao, Gang Peng, Ping Ye, Jun Yang, Yufeng Yuan, Xiaodong Huang, Jiao Guo, Bing-Hong Zhang, and Hongliang Li

Supplemental Figures:

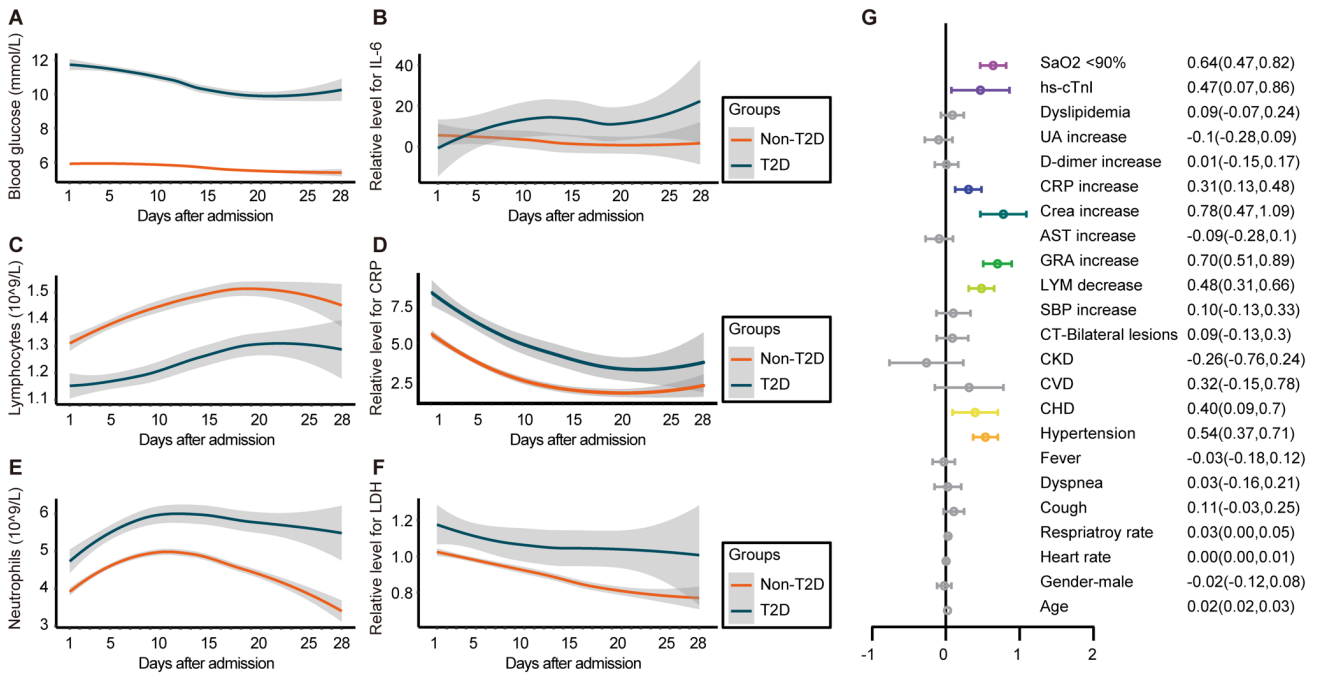


Figure S1. Dynamics of BG, lymphocytes, neutrophils, IL-6, CRP and LDH in T2D and non-T2D groups during hospitalization.

(A)–(F) Dynamic trajectories of blood glucose, lymphocytes, neutrophils and relative level for IL-6, CRP, LDH during 28-day follow-up duration with 95% confidence interval represented by shaded regions. Comparison between patients with T2D (blue) versus non-T2D patients (orange).

(G) Coefficients of factors related to viral infection or glucose control which affect the median of blood glucose based on generalized linear model. Age, respiratory rate, hypertension, CHD, lymphocyte (LYM) decrease, Neutrophil granulocyte (GRA) increase, Creatinine (CREA) increase, c-reactive protein (CRP) increase, hs-cTnI and SpO2<90% were positively associated with the median of blood glucose.

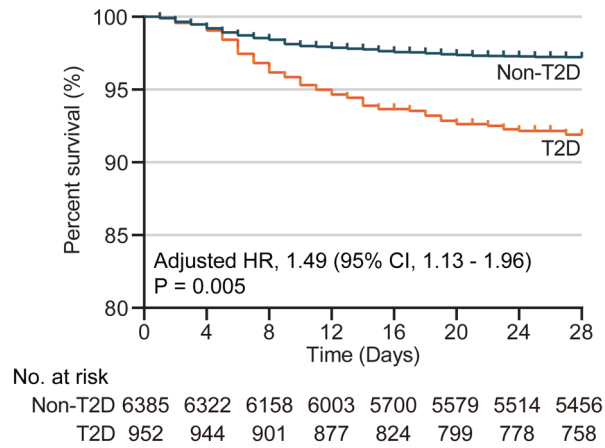


Figure S2. Kaplan-Meier Curves for cumulative probability of COVID-19 mortality during 28-day follow-up duration in T2D and non- T2D cohorts. The blips indicate censoring.

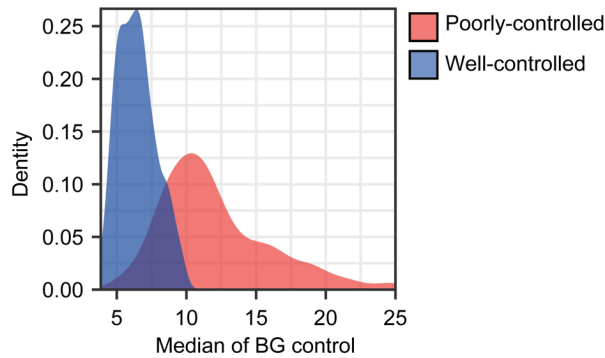


Figure S3. Distribution of glycemic variability in the well-controlled BG control group and the poorly-controlled BG control group

Table S1. Characteristics of patients in patients with or without T2D on admission.

| Parameters | Total (n=7337) | T2D (n=952) | Non-T2D (n=6385) | P value |
|--|--------------------------|-------------------------|--------------------------|---------|
| Clinical characteristics | | | | |
| Age, median(IQR), y | 54 (42-64) | 62 (55-68) | 53 (40-63) | <0.001 |
| Male gender, n (%) | 3477(47.4%) | 510(53.6%) | 2967(46.5%) | <0.001 |
| Female gender, n (%) | 3860(52.6%) | 442(46.4%) | 3418(53.5%) | <0.001 |
| Heart rate, median(IQR), bpm | 84.0(78.0-95.0) | 85.0(77.0-96.8) | 84.0(78.0-95.0) | 0.202 |
| Respiratory rate, median(IQR) | 20.0(19.0-21.0) | 20.0(19.0-21.0) | 20.0(19.0-21.0) | 0.133 |
| SBP, median(IQR), mmHg | 127.0(120.0-137.0) | 130.0(120.0-142.0) | 126.0(120.0-136.0) | <0.001 |
| DBP, median(IQR), mmHg | 79.0(71.0-86.0) | 80.0(72.0-86.8) | 79.0(71.0-85.0) | 0.025 |
| Days from symptom onset to hospitalization, median(IQR), d | 10.0(6.0-19.0) | 10.0(6.0-19.0) | 10.0(6.0-19.0) | 0.894 |
| Fever, n(%) | 5268(71.8%) | 671(70.5%) | 4597(72.0%) | 0.353 |
| Cough, n(%) | 4656(63.5%) | 611(64.2%) | 4045(63.4%) | 0.646 |
| Fatigue, n(%) | 2369(32.3%) | 362(38.0%) | 2007(31.4%) | <0.001 |
| Dyspnea, n(%) | 1178(16.1%) | 195(20.5%) | 983(15.4%) | <0.001 |
| Comorbidities | | | | |
| Hypertension, n(%) | 1763(24.0%) | 508(53.4%) | 1255(19.7%) | <0.001 |
| Coronary heart disease, n(%) | 363(5.0%) | 130(13.7%) | 233(3.7%) | <0.001 |
| Chronic liver disease, n(%) | 127(1.7%) | 16(1.7%) | 111(1.7%) | 1.000 |
| Cerebrovascular diseases, n(%) | 146(2.0%) | 53(5.6%) | 93(1.5%) | <0.001 |
| Chronic kidney disease, n(%) | 129(1.8%) | 47(4.9%) | 82(1.3%) | <0.001 |
| COPD, n(%) | 56(0.8%) | 12(1.3%) | 44(0.7%) | 0.091 |
| Chest CT | | | | |
| Unilateral lesion, n/N(%) | 826/6739(12.3%) | 60/868(6.9%) | 766/5871(13.1%) | <0.001 |
| Bilateral lesions, n/N (%) | 5484/6739(81.4%) | 765/868(88.1%) | 4719/5871(80.4%) | <0.001 |
| Laboratory examination | | | | |
| Leukocyte count>9.5, 10 ⁹ /L, n/N (%) | 464/6407(7.2%) | 98/870(11.3%) | 366/5537(6.6%) | <0.001 |
| Neutrophil count > 6.3, 9.5 10 ⁹ /L, n/N (%) | 698/6397(10.9%) | 149/869(17.2%) | 549/5528(9.9%) | <0.001 |
| Lymphocyte count < 1.1, 9.5 10 ⁹ /L, n/N (%) | 2190/6398(34.2%) | 387/869(44.5%) | 1803/5529(32.6%) | <0.001 |
| C-reactive protein increase>ULN ^a , n/N (%) | 2044/4597(44.5%) | 365/640(57.0%) | 1679/3957(42.4%) | <0.001 |
| Procalcitonin level increase>ULN ^a , n/N (%) | 1082/4874(22.2%) | 233/700(33.3%) | 849/4174(20.3%) | <0.001 |
| ALT increase> 40 U/L, n/N (%) | 1032/6046(17.1%) | 124/828(15.0%) | 908/5218(17.4%) | 0.094 |
| AST increase> 40 U/L, n/N (%) | 1019/6047(16.9%) | 145/827(17.5%) | 874/5220(16.7%) | 0.607 |
| Creatinine>ULN ^a , n/N (%) | 373/6225(6.0%) | 103/860(12.0%) | 270/5365(5.0%) | <0.001 |
| D-dimer> ULN ^a , n/N (%) | 1944/5437(35.8%) | 390/772(50.5%) | 1554/4665(33.3%) | <0.001 |
| K ⁺ < 3.5 mmol/L, n/N (%) | 983/6169(15.9%) | 133/852(15.6%) | 850/5317(16.0%) | 0.820 |
| LDL-c, mmol/L, median (IQR) | 2.4(2.0-3.0) [n=4391] | 2.4(1.9-3.0) [n=667] | 2.4(2.0-3.0) [n=3724] | 0.051 |
| SpO ₂ , <95%, n/N (%) | 742/5326(13.9%) | 135/717(18.8%) | 607/4609(13.2%) | <0.001 |
| Blood glucose, median (IQR), mmol/L | 5.3(4.7-6.7) | 8.3(6.2-12.4) | 5.2(4.7-6.1) | <0.001 |

Abbreviations: SBP, Systolic blood pressure; DBP, Diastolic blood pressure; COPD, Chronic obstructive pulmonary disease; ALT, alanine transaminase; AST, Aspartate transaminase; IQR, Interquartile range. a, upper limit of normal (ULN) was defined according to criteria in each hospital

Table S2. In-hospital management of COVID-19 patients with or without T2D on admission

| Management | Total (n=7337) | T2D (n=952) | Non-T2D (n=6385) | P value |
|--|-------------------|----------------|---------------------|---------|
| Traditional Chinese medicine, n (%) | 5755(78.4%) | 745(78.3%) | 5010(78.5%) | 0.917 |
| Antiviral drug, n (%) | 4874(66.4%) | 642(67.4%) | 4232(66.3%) | 0.504 |
| Antibiotics drug, n (%) | 4217(57.5%) | 584(61.3%) | 3633(56.9%) | 0.011 |
| Systemic corticosteroids, n (%) | 1737(23.7%) | 280(29.4%) | 1457(22.8%) | <0.001 |
| Immunoglobulin, n (%) | 1347(18.4%) | 219(23.0%) | 1128(17.7%) | <0.001 |
| Anti-hypertensive drug, n (%) | 1773(24.2%) | 429(45.1%) | 1344(21.1%) | <0.001 |
| Lipid lowering drug, n (%) | 452(6.2%) | 143(15.0%) | 309(4.8%) | <0.001 |
| Vasoactive drug, n (%) | 216(2.9%) | 73(7.7%) | 143(2.2%) | <0.001 |
| Antifungal medications, n (%) | 103(1.4%) | 24(2.5%) | 79(1.2%) | 0.003 |
| Metformin, n (%) | 302(4.1%) | 302(31.7%) | 0(0.0%) | <0.001 |
| Sulfonylurea, n (%) | 118(1.6%) | 118(12.4%) | 0(0.0%) | <0.001 |
| DPP-4 inhibitor, n (%) | 63(0.9%) | 63(6.6%) | 0(0.0%) | <0.001 |
| Insulin, n (%) | 384(5.2%) | 384(40.3%) | 0(0.0%) | <0.001 |
| Alpha-glucosidase inhibitor, n (%) | 378(5.2%) | 378(39.7%) | 0(0.0%) | <0.001 |
| Triazolidinedione, n (%) | 14(0.2%) | 14(1.5%) | 0(0.0%) | <0.001 |
| Meglitide | 40(0.6%) | 40(4.2%) | 0(0.0%) | <0.001 |
| Oxygen inhalation, n (%) | 4638(63.2%) | 732(76.9%) | 3906(61.2%) | <0.001 |
| Noninvasive ventilation, n (%) | 345(4.7%) | 97(10.2%) | 248(3.9%) | <0.001 |
| Invasive ventilation, n (%) | 80(1.1%) | 34(3.6%) | 46(0.7%) | <0.001 |
| Renal replacement therapy, n(%) | 57(0.8%) | 19(2.0%) | 38(0.6%) | <0.001 |
| Extracorporeal membrane oxygenation, n (%) | 8(0.1%) | 5(0.5%) | 3(0.1%) | 0.001 |

a, Noninvasive ventilation, invasive ventilation, and extracorporeal membrane oxygenation are at mutually exclusive.

Table S3. Incidence for primary and secondary outcomes in T2D and non-T2D groups

| Outcomes | Total (n=7337) | T2D (n=952) | Non-T2D (n=6385) | <i>P</i> value |
|----------------------------|-------------------|----------------|---------------------|----------------|
| All-cause mortality, n (%) | 248(3.4%) | 74(7.8%) | 174(2.7%) | <0.001 |
| Septic shock, n (%) | 76(1.3%) | 27(3.8%) | 49(1.0%) | <0.001 |
| ARDS, n (%) | 622(8.5%) | 161(16.9%) | 461(7.2%) | <0.001 |
| DIC, n (%) | 18(0.3%) | 5(0.5%) | 13(0.2%) | 0.074 |
| Acute kidney injury, n (%) | 86(1.2%) | 37(3.9%) | 49(0.8%) | <0.001 |
| Acute heart injury, n (%) | 260(3.5%) | 69(7.3%) | 191(3.0%) | <0.001 |

Abbreviations: ARDS, Acute respiratory distress syndrome; DIC, disseminated intravascular coagulation.

Table S4. Hazard Ratio for primary and secondary outcome in T2D and non-T2D groups

| T2D vs non-T2D | Unadjusted | | Adjusted ^a | | Adjusted ^b | |
|---------------------|-----------------|---------|-----------------------|----------------------|-----------------------|----------------------|
| | HR(95%CI) | P value | HR(95%CI) | P value ^c | HR(95%CI) | P value ^d |
| All-cause mortality | 2.90(2.21,3.81) | <0.001 | 1.70(1.29,2.24) | <0.001 | 1.49(1.13,1.96) | 0.005 |
| Septic shock | 3.66(2.25,5.95) | <0.001 | 2.43(1.48,3.99) | <0.001 | 1.95(1.18,3.20) | 0.009 |
| ARDS | 2.47(2.06,2.95) | <0.001 | 1.71(1.42,2.06) | <0.001 | 1.44(1.20,1.73) | <0.001 |
| DIC | 2.58(0.92,7.23) | 0.072 | 1.40(0.49,3.94) | 0.529 | 1.28(0.45,3.64) | 0.644 |
| Acute kidney injury | 5.11(3.33,7.83) | <0.001 | 3.43(2.21,5.34) | <0.001 | 3.01(1.94,4.68) | <0.001 |
| Acute heart injury | 2.47(1.87,3.25) | <0.001 | 1.53(1.16,2.03) | 0.003 | 1.32(0.99,1.74) | 0.055 |

Abbreviations: ARDS, Acute respiratory distress syndrome; DIC, disseminated intravascular coagulation; HR, Hazard ratio; CI, Confidence interval.

a, The adjusted variables included age and gender, hospital sites (as a random effect).

b, The adjusted variables included age, gender, indicators of the severity of COVID-19, hospital sites (as a random effect).

c,d, the P values were calculated based on Cox proportional hazard model.

Table S5. Incidence for primary and secondary outcomes of patients in the well-controlled or poorly-controlled BG group.

| Outcome | Total (N=810) | Well-controlled | Poorly-controlled | P value |
|----------------------------|---------------|-----------------|-------------------|---------|
| | | (n=282) | (n=528) | |
| All-cause mortality, n (%) | 61(7.5%) | 3(1.1%) | 58(11.0%) | <0.001 |
| Septic shock, n (%) | 19(3.1) | 0(0.0%) | 19(4.7%) | 0.004 |
| ARDS, n (%) | 133(16.4%) | 20(7.1%) | 113(21.4%) | <0.001 |
| DIC, n (%) | 3(0.4%) | 0(0.0%) | 3(0.6%) | 0.555 |
| Acute kidney injury, n (%) | 22(2.7%) | 2(0.7%) | 20(3.8%) | 0.019 |
| Acute heart injury, n (%) | 56(6.9%) | 4(1.4%) | 52(9.9%) | <0.001 |

Abbreviations: ARDS, Acute respiratory distress syndrome; DIC, disseminated intravascular coagulation;

Table S6. Hazard Ratio for primary and secondary outcomes of patients in the well-controlled or poorly-controlled BG group.

| | Unadjusted | | Adjusted ^a | | Adjusted ^b | |
|-------------------------------|-----------------|---------|-----------------------|----------------------|-----------------------|----------------------|
| | HR(95%CI) | P value | HR(95%CI) | P value ^c | HR(95%CI) | P value ^d |
| Flexible BG VS. Intensive BG. | | | | | | |
| All-cause mortality | 0.09(0.03,0.30) | <0.001 | 0.10(0.03,0.32) | <0.001 | 0.13(0.04,0.44) | <0.001 |
| Septic shock | - | - | - | - | - | - |
| ARDS | 0.31(0.19,0.50) | <0.001 | 0.32(0.20,0.51) | <0.001 | 0.41(0.25,0.66) | <0.001 |
| DIC | - | - | - | - | - | - |
| Acute kidney injury | 0.19(0.04,0.80) | 0.024 | 0.21(0.05,0.88) | 0.033 | 0.22(0.05,1.03) | 0.055 |
| Acute heart injury | 0.14(0.05,0.39) | <0.001 | 0.15(0.05,0.41) | <0.001 | 0.21(0.07,0.59) | 0.003 |

Abbreviations: ARDS, Acute respiratory distress syndrome; DIC, disseminated intravascular coagulation; HR, Hazard ratio; CI, Confidence interval.
a, The adjusted variables included age and gender and hospital sites (as a random effect).
b, The adjusted variables included age, gender, indicators of the severity of COVID-19, comorbidities (hypertension, coronary heart disease, and chronic renal diseases), and hospital sites (as a random effect).
c,d, the P values were calculated based on Cox proportional hazard model.

Table S7. Incidence for primary and secondary outcomes of patients in the well-controlled or poorly-controlled BG group.

| Outcomes | Total (N=500) | Well-controlled (n = 250) | Poorly-controlled (n = 250) | P value |
|----------------------------|---------------|---------------------------|-----------------------------|---------|
| All-cause mortality, n (%) | 17(3.4%) | 2(0.8%) | 15(6.0%) | 0.003 |
| Septic shock, n (%) | 3(0.8%) | 0(0.0%) | 3(1.7%) | 0.119 |
| ARDS, n (%) | 55(11.0%) | 18(7.2%) | 37(14.8%) | 0.010 |
| DIC, n (%) | 0(0.0%) | 0(0.0%) | 0(0.0%) | 1.000 |
| Acute kidney injury, n (%) | 9(1.8%) | 1(0.4%) | 8(3.2%) | 0.037 |
| Acute heart injury, n (%) | 21(4.2%) | 4(1.6%) | 17(6.8%) | 0.007 |

Abbreviations: ARDS, Acute respiratory distress syndrome; DIC, disseminated intravascular coagulation.

Table S8. In-hospital management of participants with well-controlled or poorly-controlled BG after PSM

| Management | Total (N=500) | Well-controlled (n=250) | Poorly-controlled (n=250) | P value |
|--|--------------------------|------------------------------------|--------------------------------------|----------------|
| Traditional Chinese medicine, n (%) | 409(81.8%) | 198(79.2%) | 211(84.4%) | 0.164 |
| Antiviral drug, n (%) | 340(68%) | 180(72%) | 160(64%) | 0.069 |
| Antibiotics drug, n (%) | 289(57.8%) | 150(60%) | 139(55.6%) | 0.365 |
| Systemic corticosteroids, n (%) | 126(25.2%) | 69(27.6%) | 57(22.8%) | 0.257 |
| Immunoglobulin, n (%) | 95(19%) | 52(20.8%) | 43(17.2%) | 0.362 |
| Anti-hypertensive drug, n (%) | 230(46%) | 119(47.6%) | 111(44.4%) | 0.530 |
| Lipid lowering drug, n (%) | 81(16.2%) | 46(18.4%) | 35(14%) | 0.225 |
| Metformin, n (%) | 164(32.8%) | 98(39.2%) | 66(26.4%) | 0.003 |
| Sulfonylurea, n (%) | 55(11%) | 36(14.4%) | 19(7.6%) | 0.022 |
| DPP-4 inhibitor, n (%) | 39(7.8%) | 28(11.2%) | 11(4.4%) | 0.008 |
| Insulin, n (%) | 172(34.4%) | 137(54.8%) | 35(14%) | <0.001 |
| Alpha-glucosidase inhibitor, n (%) | 194(38.8%) | 115(46%) | 79(31.6%) | 0.001 |
| Triazolidinedione, n (%) | 7(1.4%) | 5(2%) | 2(0.8%) | 0.450 |
| Meglitide | 18(3.6%) | 12(4.8%) | 6(2.4%) | 0.230 |
| Oxygen inhalation, n (%) | 389(77.8%) | 207(82.8%) | 182(72.8%) | 0.010 |
| Noninvasive ventilation, n (%) | 33(6.6%) | 22(8.8%) | 11(4.4%) | 0.072 |
| Invasive ventilation, n (%) | 7(1.4%) | 7(2.8%) | 0(0%) | 0.015 |
| Renal replacement therapy, n(%) | 9(1.8%) | 4(1.6%) | 5(2%) | 1.000 |
| Extracorporeal membrane oxygenation, n (%) | 2(0.4%) | 2(0.8%) | 0(0%) | 0.499 |

a, Noninvasive ventilation, invasive ventilation, and extracorporeal membrane oxygenation are at mutually exclusive.

Table S9. Sensitivity analyses for primary and secondary outcome in well-controlled BG and poorly-controlled groups

| | Sensitivity analyses 1 | | Sensitivity analyses 2 | |
|--------------------------|-------------------------------|-----------------------------|-------------------------------|-----------------------------|
| | Adjusted | | Adjusted | |
| Satisfied vs Unsatisfied | HR(95%CI) | <i>P</i> value ^a | HR(95%CI) | <i>P</i> value ^b |
| All-cause mortality | 0.17(0.05,0.61) | 0.006 | 0.16(0.05,0.58) | 0.005 |
| Septic shock | - | - | - | - |
| ARDS | 0.43(0.24,0.78) | 0.005 | 0.39(0.22,0.70) | 0.001 |
| DIC | - | - | - | - |
| Acute kidney injury | 0.51(0.09,2.78) | 0.434 | 0.52(0.09,2.82) | 0.444 |
| Acute heart injury | 0.16(0.05,0.56) | 0.004 | 0.15(0.04,0.53) | 0.003 |

a,b, the *P* values were calculated based on Cox proportional hazard model.